

PRODUCT NAME

Direct Acting Solenoid Valve of Intrinsically safe

DESCRIPTION OF THE PRODUCT

Direct acting spring return normally closed solenoid valve with Ex ia IIC T6 Ga aluminium enclosure coil. According to the CNOMO-30 standard, this solenoid valve can be directly attached to various flow pneumatic valves to implement pilot control in hazardous area (Class 1 Zone 0).



APPROVED BY



IP67

Coil Specification (C7)

Coil Enclosure	Die-casting aluminum + Epoxy coated
Wiring Connector	M20-1.5 or 1/2"NPT, Terminal Strip
Operating Voltage	12~24VDC±10% (Switching Current = 38mA±10% at 12VDC)
Insulation Protection	H Class
Insulated voltage	1000V
Duty factor	100% ED
Area Classification	Ex ia IIC T6 Ga, Ex ia IIIC T85°C Db

BODY TECHNICAL DATA

Body	Extruded aluminum + anodized coated
Seal	Buna N
Fasteners	Stainless steel
Function	3/2 direct acting, spring return, NC
Manual Override	on the body
Air Ports	φ3mm
Flow rate	29.1L/M, CV=0.03 (0.8mm)
Mounting	CNOMO interface
Working Medium	≤ 40μm filtered and dried air (0~8 bar)
Working Temp.	-40°C~60°C
Weather Proof	IP67

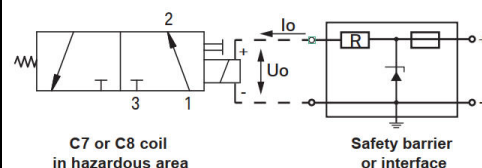
Supply Specifications for Coil of C7

Parameter	ATEX	IECEX
Ui	26VDC	26VDC
Ii	142mA	146mA
Pi	923mW	949mW
Ci	0μF	0μF
Li	0μH	0μH

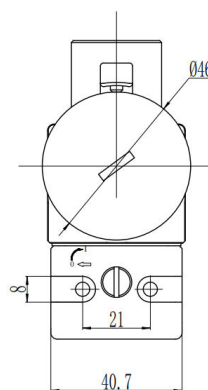
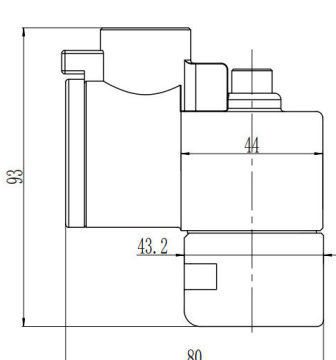
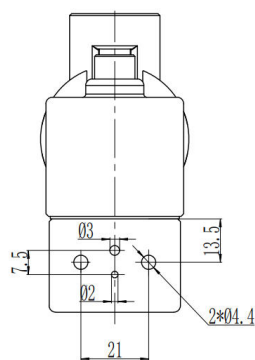
Wiring connection instructions

As shown above, the coil C7 must be connected individually to an approved safety barrier. Placed in safe zone, these safety barriers can be used to supply ATEX pilot coil C7 installed in a hazardous zone. The electrical connection between the safety barrier(or interface) and the pilot coil C7 can be made using ordinary wires or cables. The inductance of the connecting line between the safety barrier and the pilot coil C7 must be less than 0.5mH.

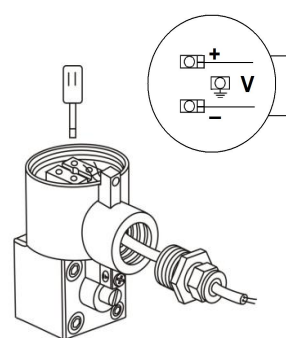
Wiring with barrier



DIMENSION AND DRAWING



Wiring Operating



*For continuous improvement of the product, we reserve the right to alter the dimensions, technical data in this data sheet.

PRODUCT NAME

Direct Acting Solenoid Valve of Intrinsically safe

DESCRIPTION OF THE PRODUCT

Direct acting spring return normally closed solenoid valve with Ex ia IIC T6 Ga Stainless steel coil. According to the CNOMO-30 standard, this solenoid valve can be directly attached to various flow pneumatic valves to implement pilot control in hazardous area (Class 1 Zone 0).



APPROVED BY



IP67

BODY TECHNICAL DATA

Body	Stainless steel 316
Seal	Buna N
Fasteners	Stainless steel
Function	3/2 direct acting, spring return, NC
Manual Override	on the body
Air Ports	φ3mm
Flow rate	29.1L/M, CV=0.03 (0.8mm)
Mounting	CNOMO interface
Working Medium	≤ 40μm filtered and dried air (0~8 bar)
Working Temp.	-40℃~60℃
Weather Proof	IP67

Coil Specification (C8)

Coil Enclosure	Stainless steel 316
Wiring Connector	M20-1.5 or 1/2"NPT, Terminal Strip
Operating Voltage	12~24VDC±10% (Switching Current = 38mA±10% at 12VDC)
Insulation Protection	H Class
Insulated voltage	1000V
Duty factor	100% ED
Area Classification	Ex ia IIC T6 Ga, Ex ia IIIC T85℃ Db

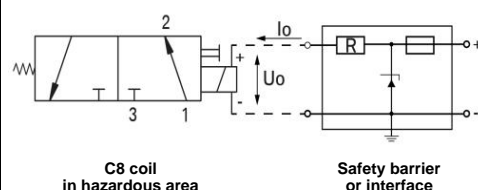
Supply Specifications for Coil of C8

Parameter	ATEX	IECEX
Ui	26VDC	26VDC
Ii	142mA	146mA
Pi	923mW	949mW
Ci	0μF	0μF
Li	0μH	0μH

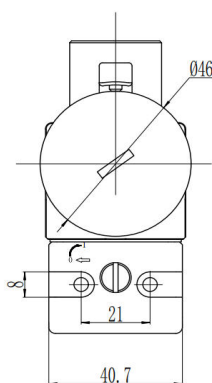
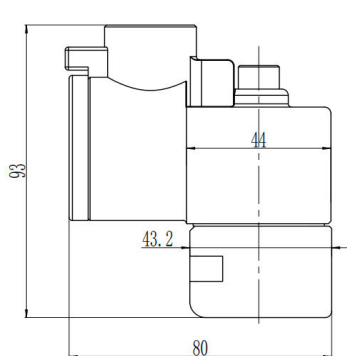
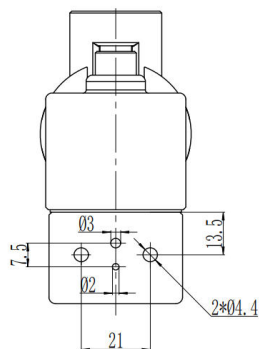
Wiring connection instructions

As shown above, the coil C8 must be connected individually to an approved safety barrier. Placed in safe zone, these safety barriers can be used to supply ATEX pilot coil C8 installed in a hazardous zone. The electrical connection between the safety barrier(or interface) and the pilot coil C8 can be made using ordinary wires or cables. The inductance of the connecting line between the safety barrier and the pilot coil C8 must be less than 0.5mH.

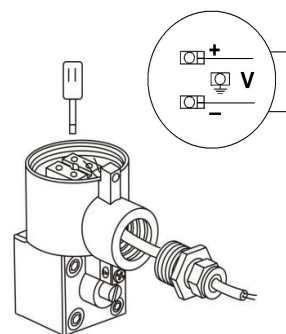
Wiring with barrier



DIMENSION AND DRAWING



Wiring Operating



*For continuous improvement of the product, we reserve the right to alter the dimensions, technical data in this data sheet.